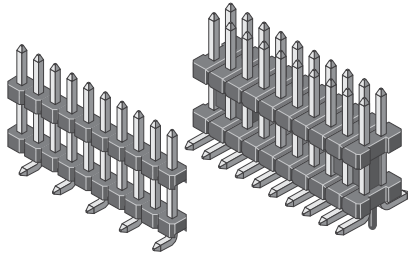


Pin Header SMD Sandwich 1,00 mm

Series

355



Rated current	1,0 A
Rated voltage	50 V _{RMS} / V _{DC}
Withstand voltage	250 V _{RMS} for one minute
Material contact	Copper alloy
Material insulator	High temp. thermoplast UL94V-0
Operating temperature	-40°C to +105°C
Max. processing temper.	260°C for 10 seconds

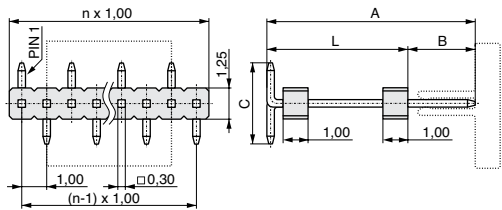
pitch	1,00
termination	
contact size	<input type="checkbox"/> 0,30
max. pincount	050 / 100

All dimensions in mm.

Product group
3

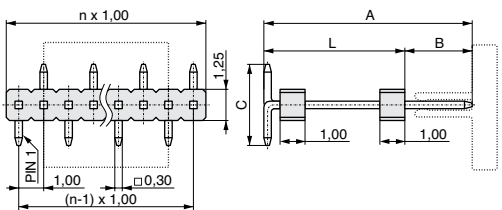
Variation

Layout A

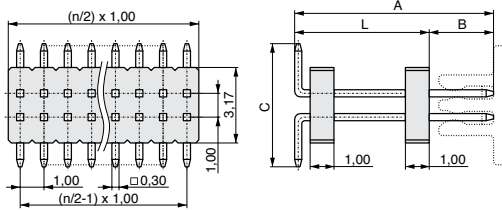


1

Layout B

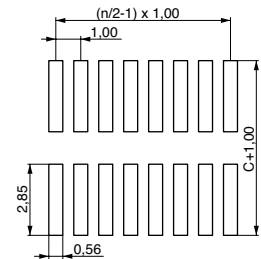
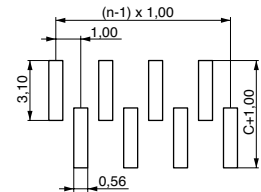
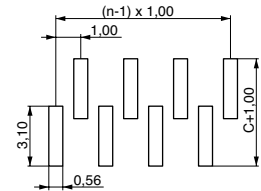


2



3

PCB Layout



see figure left	see figure left	see figure left	see figure left	available in variation
A	B	C	L	
8,70	6,00	6,50	2,70	1 2 3
9,80	6,00	6,50	3,80	1 2 3

Plating: T = Sn, F = Au, S = Selective Au
 Packaging: R = Reel, T = Tube
 Cap: 0 = Without cap, 1 = With cap

* No. of contacts:
 Variation 1 = 003 - 050
 Variation 2 = 003 - 050
 Variation 3 = 004 - 100

Variation (1,2,3)

No. of contacts *
(003, ... - 100)

Plating contact (T,F,S)

Packaging (R,T)

Cap (0,1)

A (1/100 mm)
e.g. 1000 = 10,00 mm



www.mpe-connector.de

CS190315_V2

Order code:

355 - 2 - 2 - 003 - 0 - R - 1000

Mating series **306**
 see page **4-4**