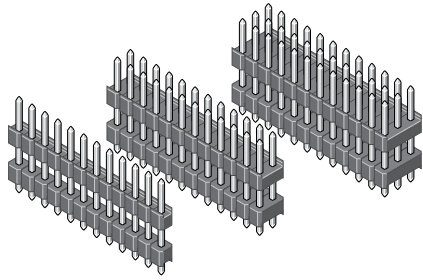


Pin Header Sandwich 2,54 mm

Series

089

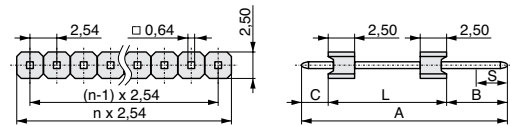


Rated current	3,0 A
Rated voltage	250 V _{RMS} / VDC
	Please consider air- and creepage distances
Withstand voltage	500 V _{RMS} for one minute
Material contact	Copper alloy
Material insulator	High temp. thermoplast UL94V-0
Operating temperature	-40°C to +105°C
Max. processing temper.	260°C for 10 seconds

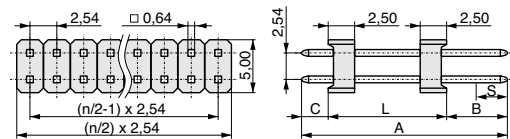
pitch	2,54
termination	
contact size	
	0,64
max. pincount	050/100/120

All dimensions in mm.

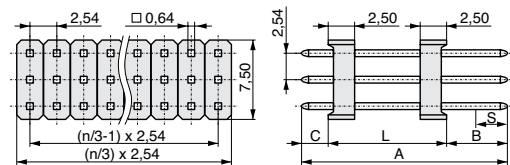
Variation



1

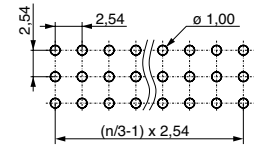
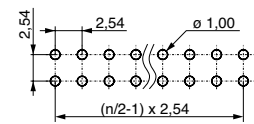
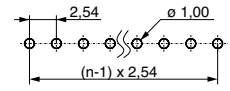


2



3

PCB Layout



see figure left	see figure left	see figure left	see figure left	available in variation
A	B	C	L	
17,70	5,70	3,30	8,70	1 2 3
19,80	5,70	3,30	10,80	1 2 3
21,60	5,70	3,30	12,60	1 2 3
22,80	5,70	3,30	13,80	1 2 3
24,90	5,70	3,30	15,90	1 2 3
26,70	5,70	3,30	17,70	1 2 3
29,00	5,70	3,30	20,00	1 2 3
30,80	5,70	3,30	21,80	1 2 3
37,80	5,70	3,30	28,80	1 2 3
40,80	5,70	3,30	31,80	1 2 3

**** Plating:**
 T = Sn
 F = Au
 S = Selective Au (min 5 mm on mating side)

*** No. of contacts:**
 Variation 1 = 001 - 050
 Variation 2 = 002 - 100
 Variation 3 = 003 - 120



Order code:

089 - 2 - 222 - 0 - 2 - X S 0 - 222



Mating series	094	095	096	097	298	299	099	100	098	366	111	115	612	613	114	122	120	430		
see page	4-22	4-23	4-24	4-25	4-26	4-27	4-28	4-29	4-30	4-31	4-32	4-33	4-34	4-35	4-37	4-38	4-39	6-10		

Product group
3

MPE-Garry GmbH • Schafflerstraße 13 • 87629 Füssen • Germany • Phone: +49 (0) 83 62 / 91 56-0 • Fax: +49 (0) 83 62 / 91 56-500 • Email: vk@mpe-connector.de • www.mpe-connector.de

CS130116_V3